



Kang Chiao International School East China Campus



CEEB Code: 694587
IB World School Code: S050407

500 XiHuan Road, Huaqiao Economic Development Zone,
Kunshan City, Jiangsu, 215332, China
Website: en.kcisec.com/support-40.html Tel: 86 (0) 512 8269 9000

Principal of International Department & KCISEC

Victor Chuang
Email: victorchuang@kcisec.com
Tel: +86 512 82699600

Director of Counseling Department

Paul Zhai
Email: paul_zhai@kcisec.com
Tel: +86 512 82699694

Coordinator of College Counseling Office

Stephy Gong
Email: stephy_gong@kcisec.com
Tel: +86 512 82699905

INTRODUCTION

Kang Chiao International School was formally introduced to Mainland China by the invitation of local Government of Kunshan in 2012. Kang Chiao International School is a private co-education boarding school. It opened in September of 2014, while its Taipei campus was founded in 2002. It currently offers an overseas college preparatory program for Grades 6 -12.

PHILOSOPHY AND MISSION

KCISEC is rigorous and continuously evolving curriculum strives to motivate all students to be positive, proactive members of their local and global community.

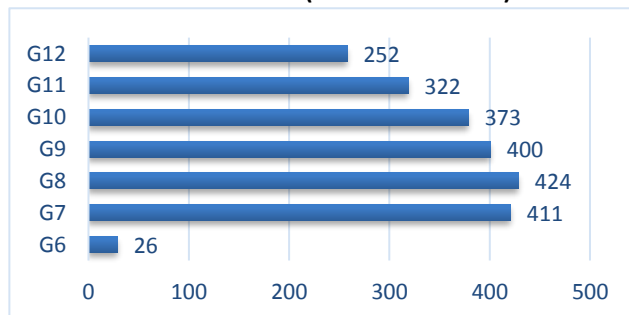
The school seeks to provide students with:

- ✚ the tools to communicate through effective listening with an empathetic ear
- ✚ an understanding and appreciation of cultural diversity
- ✚ a desire for active involvement; socially, academically, and physically
- ✚ the ability to consider questions and create solutions
- ✚ the skills, moral strength, and motivation to bring about genuine personal growth and positive social change

FACULTY AND STUDENTS

- ✚ The KCISEC student body consists of 87.4% Chinese, 9.3% Taiwanese and 3.3% from 14 countries including the U.S., Canada, UK, Denmark, Australia, New Zealand, Japan, Korea, Singapore, Malaysia, Germany and Dominican.
- ✚ KCISEC employs 147 foreign teachers. 28.8% of the teachers are from the U.S.A., UK, Canada and Australia.

2020-2021 Student Profile (Enrollment: 2208)



EXTRACURRICULAR PROGRAMS

KCISEC students are required to perform several hours of community service. KCISEC offers a variety of extracurricular activities, except those with an agreed exemption, students are required to participate in our “Exploring Taiwan/Asia Program”, which includes:

- ✚ “3 Kingdoms” Challenging Camp (G8)
- ✚ Field Research 9: One Belt one Road Program (G9)
- ✚ Independent Research 10: Cycling Around Taiwan(G10)




COURSE OFFERINGS

The High School Program (G9- G12) at KCISEC is designed to prepare students for college and university admission. Students are advised to take courses that are academically challenging and meet the admission requirements of universities in the country in which they intend to study. To eligible for high school graduation, a student must meet the required credits.

Graduation Credit Requirements

*Minimum of 28 credits

| | | |
|-----------|-----------------------|-----------------------------|
| English-4 | English Electives-2~3 | Global Languages-2 |
| Science-4 | Social Studies-4 | Fine Arts/Performing Arts-1 |
| Math-4 | Electives-4 | PE/Swimming-2 |

-  There will be no required swimming for G10-G12, but swimming may be taken as an elective and may be repeated
-  All G11 and G12 students must enroll in Public Speaking and Research & Writing
-  All G11 and G12 must enroll in a science and math course


KCISEC offers students the opportunity to take a full range of Honor courses and AP courses or a combination of them, enabling students to tailor the rigor and depth of their education. Students are also given opportunities to undertake IB Middle Years Program at Grades 6-10 and Diploma Program at Grades 11 and 12.

| 2020-2021 IBDP Course offerings | | | |
|---|--|----|----|
| Study Group | Subject | SL | HL |
| Group 1 Studies in Language and Literature | Chinese A: Language and Literature | √ | √ |
| | English A: Language and Literature | √ | √ |
| Group 2 Language Acquisition | English B | √ | √ |
| | French ab initio(online) | √ | |
| | Spanish ab initio(online) | √ | |
| Group 3 Individual and Societies | Business and Management | √ | √ |
| | Economics | √ | √ |
| | Information Technology in a Global Society(online) | √ | √ |
| | History | √ | √ |
| | Environmental System and Societies (Interdisciplinary subject) | √ | |
| Group 4 Sciences | Physics | √ | √ |
| | Biology | √ | √ |
| | Chemistry | √ | √ |
| | Design Technology | √ | √ |
| | Environmental System and Societies (Interdisciplinary subject) | √ | |
| Group 5 Mathematics | Mathematics AA | √ | √ |
| | Mathematics AI | √ | √ |
| Group 6 The Arts | Music | √ | √ |
| | Visual Arts | √ | √ |
| TOK(Chinese) | | √ | |
| TOK(English) | | √ | |
| Extended Essay | | √ | |
| Creativity, Activity, Service | | √ | |
| Swimming Thursday | | | |

| GRADING SCALE | |
|---------------|--------------|
| IB Grade | Description |
| 7 | Excellent |
| 6 | Very Good |
| 5 | Good |
| 4 | Satisfactory |
| 3 | Mediocre |
| 2 | Poor |
| 1 | Very Poor |

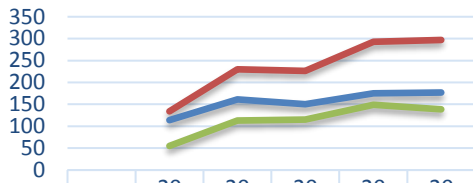
| 2020-2021 AP Course offerings (19 AP courses) | |
|--|---------------------------|
| English | AP Language & Composition |
| Math | AP Calculus AB |
| | AP Calculus BC |
| | AP Statistics |
| Science | AP Biology |
| | AP Chemistry |
| | AP Environmental |
| | AP Physics I |
| | AP Physics C |
| Social Studies | AP Human Geography |
| | AP Microeconomics |
| | AP Macroeconomics |
| | AP Psychology |
| | AP World History |
| Computer Science | AP Computer Principles |
| | AP Computer Science A |
| Art | AP Studio Drawing |
| | AP 2D Studio Art |
| | AP 3D Studio Art |
| *The maximum AP courses a student may take at one time is four | |

| GRADING SCALE | | | |
|---------------|------------|-----|-----------|
| Grade | Percentage | GPA | Honors/AP |
| A+ | 97-100 | 4.0 | 4.5 |
| A | 93-96 | 4.0 | 4.5 |
| A- | 90-92 | 3.7 | 4.2 |
| B+ | 87-89 | 3.3 | 3.8 |
| B | 83-86 | 3.0 | 3.5 |
| B- | 80-82 | 2.7 | 3.2 |
| C+ | 77-79 | 2.3 | 2.8 |
| C | 73-76 | 2.0 | 2.5 |
| C- | 70-72 | 1.7 | 2.2 |
| D+ | 67-69 | 1.3 | 1.8 |
| D | 63-66 | 1.0 | 1.5 |
| D- | 60-62 | 1.0 | 1.0 |
| F | 0-59 | 0.0 | 0.0 |

 The KCISEC transcript reports a cumulative weighted GPA and the percentage of grades value. KCISEC does not rank its student.

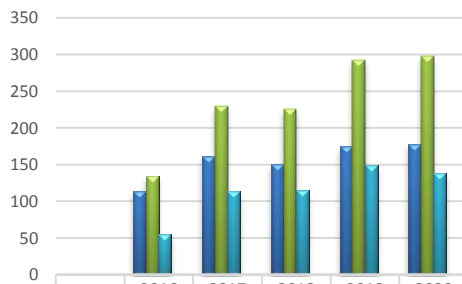
2019-2020 ACADEMIC PERFORMANCE

5 Years AP School Summary



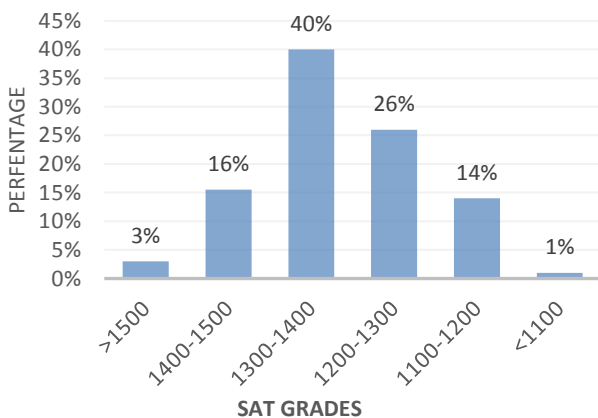
| | 2016 | 2017 | 2018 | 2019 | 2020 |
|----------------------------|------|------|------|------|------|
| Total AP Students | 114 | 161 | 150 | 175 | 177 |
| Number of Exams | 134 | 230 | 226 | 293 | 297 |
| AP Students with Scores 3+ | 55 | 113 | 115 | 149 | 139 |

% of Total AP Students with Scores 3+

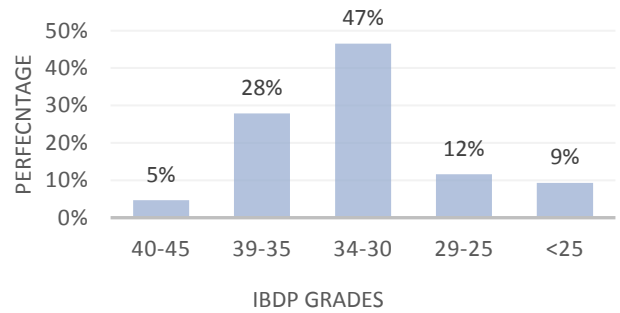


| | 2016 | 2017 | 2018 | 2019 | 2020 |
|---------------------------------------|--------|--------|--------|--------|--------|
| Total AP Students | 114 | 161 | 150 | 175 | 177 |
| Number of Exams | 134 | 230 | 226 | 293 | 297 |
| AP Students with Scores 3+ | 55 | 113 | 115 | 149 | 139 |
| % of Total AP Students with Scores 3+ | 48.20% | 70.20% | 76.70% | 85.10% | 78.50% |

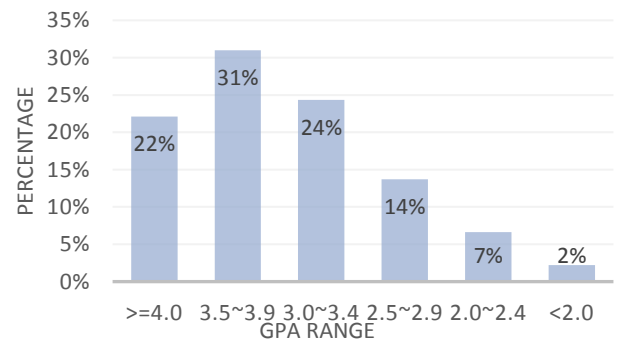
Class of 2020 SAT Result



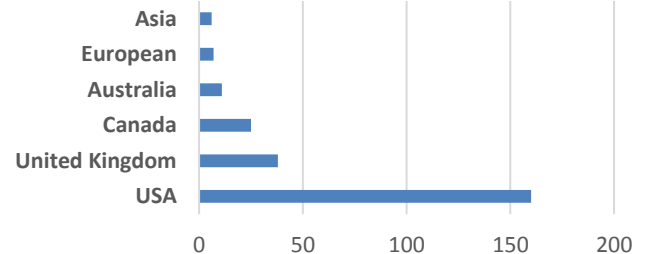
Class of 2020 IBDP Examination Result



Class of 2020 GPA Result







UNIVERSITY MATRICULATION FOR THE CLASS OF 2020



| Country | Number of Students |
|----------------|--------------------|
| USA | 177 |
| United Kingdom | 39 |
| Canada | 26 |
| Australia | 16 |
| European | 11 |
| Asia | 11 |

| USA Universities | Number of Students |
|----------------------------------|--------------------|
| Academy of Art University | 1 |
| Arizona State University | 3 |
| Auburn University | 1 |
| Baruch College | 1 |
| Bates College | 1 |
| Baylor University | 3 |
| Berklee College of Music | 1 |
| Boston College | 1 |
| Boston University | 3 |
| Brandies University | 1 |
| California Institute of the Arts | 1 |
| Case Western Reserve University | 1 |

| | | | |
|---|---|--|---|
| Fashion Institute of Technology | 1 | King's College of London | 6 |
| Fashion Institute of Design & Merchandising | 2 | Nottingham Trent University | 1 |
| Indiana University Bloomington | 1 | The University of Glasgow | 1 |
| Kenyon College | 1 | University College London | 4 |
| Loyola Marymount University | 1 | University of Arts London | 6 |
| Miami University Oxford | 1 | University of Birmingham | 6 |
| Miami University Regional | 1 | University of Bristol | 3 |
| Michigan State University | 8 | University of Edinburgh | 2 |
| New York University | 2 | University of Essex | 1 |
| Northeastern University | 7 | University of Exeter | 1 |
| Ohio State University | 5 | University of Manchester | 2 |
| Oregon State University | 1 | University of Sheffield | 3 |
| Otis College of Art and Design | 1 |  Canada | |
| Parsons the New School of Design | 2 | Carleton University | 1 |
| Pennsylvania State University-University Park | 6 | Fraser International College | 1 |
| Penn State University- Erie Campus | 1 | McMaster University | 1 |
| Penn State University - Harrisburg Campus | 2 | Ontario College of Art and Design | 1 |
| Purdue University | 2 | University of British Columbia | 7 |
| Rensselaer Polytechnic Institute | 6 | University of Calgary | 3 |
| Rutgers University - New Brunswick | 4 | University of Ottawa | 3 |
| Santa Barbara City College | 1 | University of Toronto | 6 |
| Savannah College of Arts and Design | 5 | Wildfird Laurier University | 1 |
| School of the Art Institute of Chicago | 2 | York University | 1 |
| School of Visual Arts | 3 |  Australia | |
| Sheridan College | 1 | Royal Melbourne Institute of Technology | 1 |
| Stony Brook University - SUNY | 4 | University of Melbourne | 1 |
| Syracuse University | 9 | University of New South Wales | 2 |
| The George Washington University | 2 | University of Queensland | 6 |
| The University of Miami | 1 | University of Sydney | 1 |
| Tulane University | 3 |  Europe | |
| University at Buffalo - SUNY | 3 | EHL Swiss School of Tourism and Hospitality | 1 |
| University of Arizona | 2 | Glion Institute of Higher Education | 3 |
| University of California - Berkeley | 1 | Hanze University of Applied Sciences | 1 |
| University of California - Davis | 4 | Swiss Hospitality Management School in Lausanne | 1 |
| University of California - Irvine | 1 | University of Groningen | 1 |
| University of California -Los Angeles | 1 |  Asia | |
| University of California - San Diego | 5 | James Cook University-Singapore Campus | 1 |
| University of California Santa Cruz | 2 | Meiji University | 1 |
| University of California - Santa Barbara | 2 | Temple University-Japan Campus | 1 |
| University of Central Florida | 1 | The Hong Kong Polytechnic University | 2 |
| University of College Cork | 1 | Waseda University | 1 |
| University of Colorado-Boulder | 1 | | |
| University of Connecticut | 8 | | |
| University of Illinois Urbana Champaign | 3 | | |
| University of Iowa | 1 | | |
| University of Massachusetts-Boston | 1 | | |
| University of Miami | 1 | | |
| University of Pittsburgh | 3 | | |
| University of San Francisco | 1 | | |
| University of Visual Arts | 1 | | |
| University of Washington | 7 | | |
| University of Wisconsin Madison | 3 | | |
| Villanova university | 1 | | |
| Whitman College | 1 | | |
| Worcester Polytechnic Institute | 1 | | |
|  UK | | | |
| Cardiff University | 1 | | |
| Durham University | 1 | | |

COVID-19 Statement

Kang Chiao International School, East China Campus had many challenges during the 2019-2020 school year, just like most other institutions. Online courses were offered for all subjects for quarter three. Due to China closing the border at the end of March, many of our foreign teachers were stranded in their home countries. Students were allowed to return to school for quarter four, but we had a shortage of teachers. Some courses continued to be offered online and other courses needed to be cancelled and replaced with courses that we had staff to cover. We keep the same school's approach to grading for semester 2 as before and grades were given normally.
